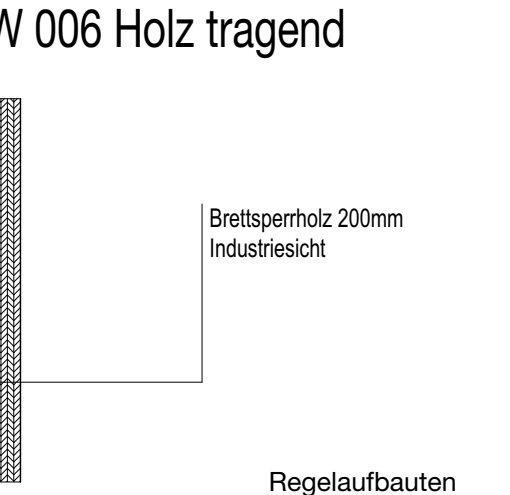
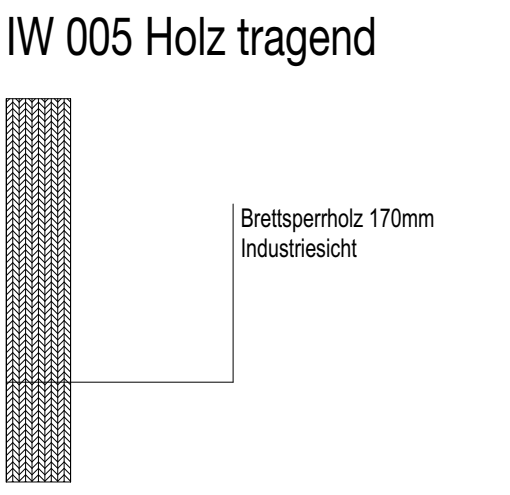
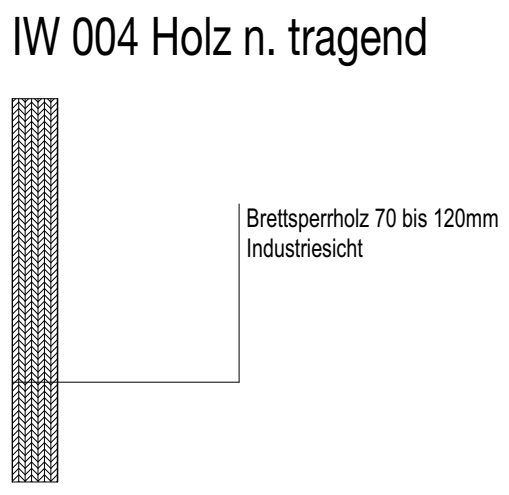
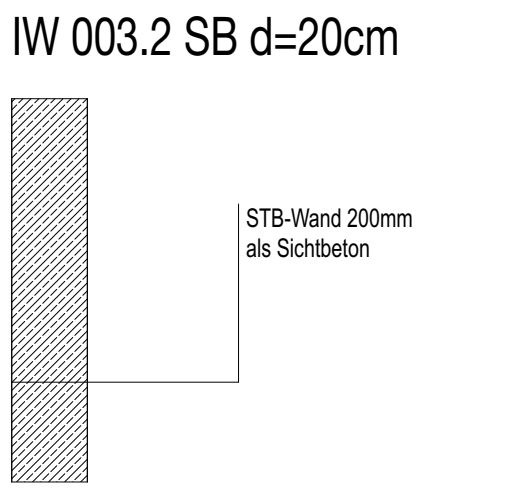
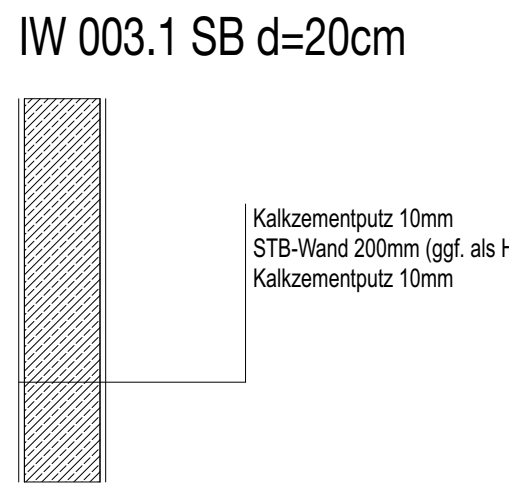
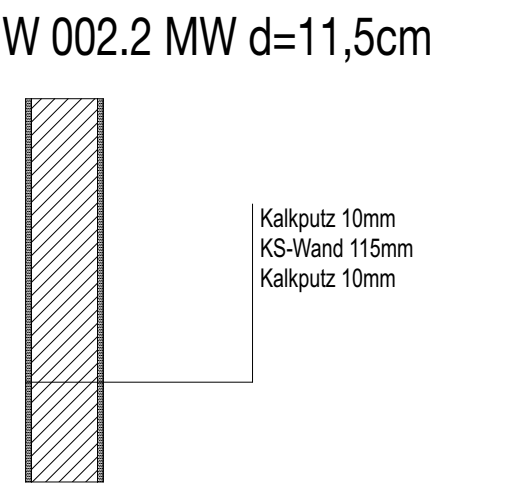
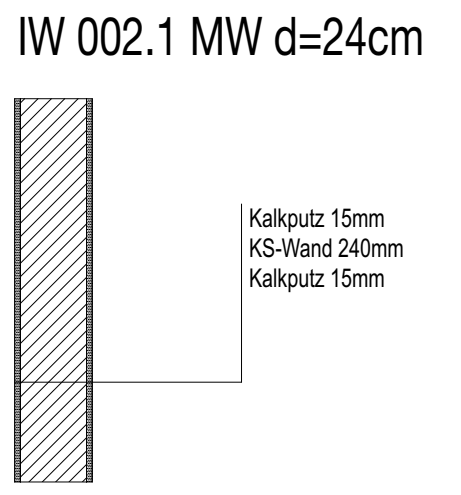
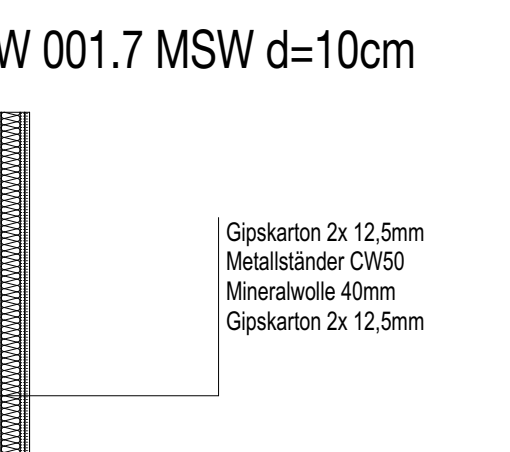
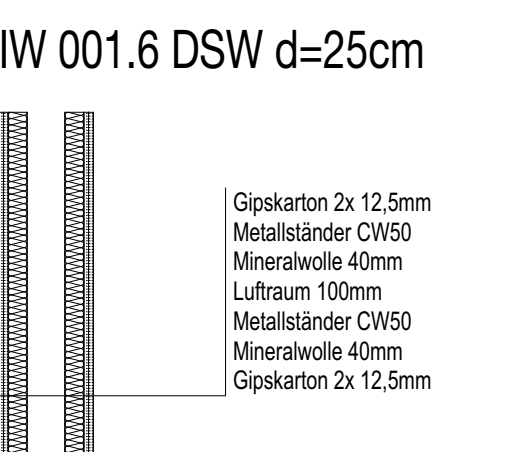
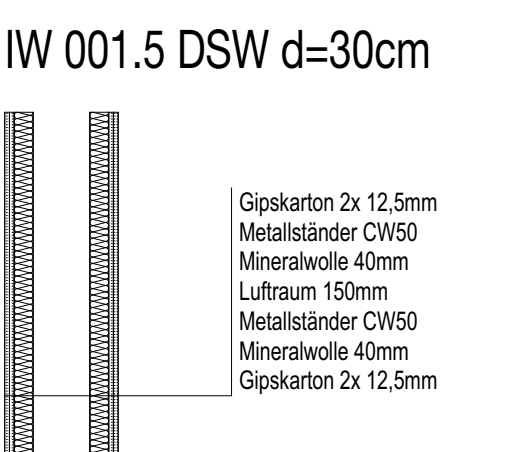
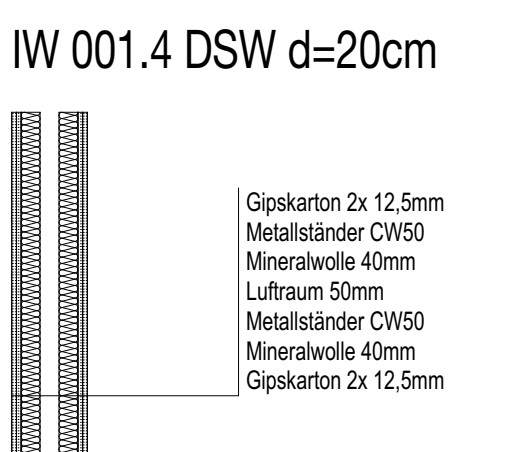
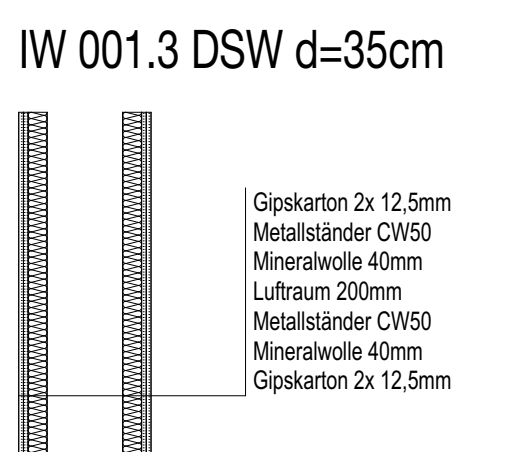
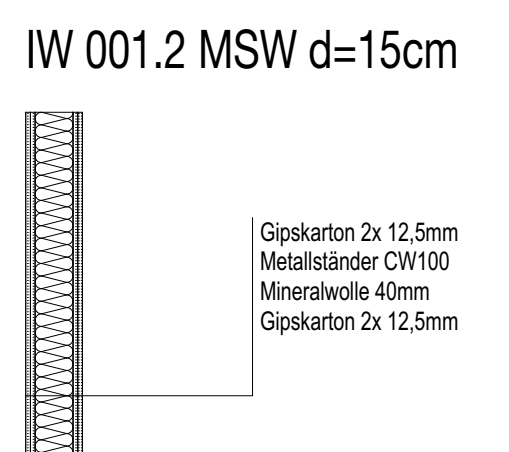
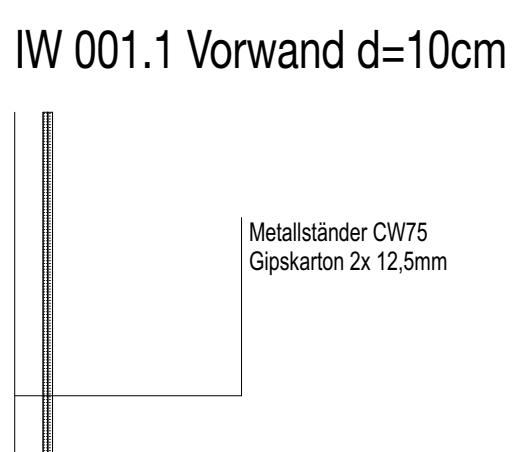
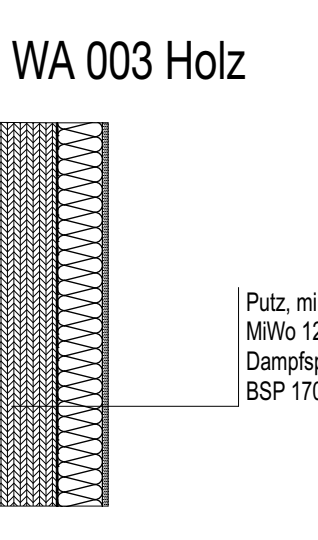
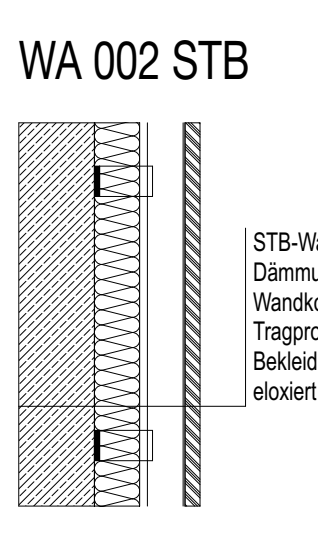
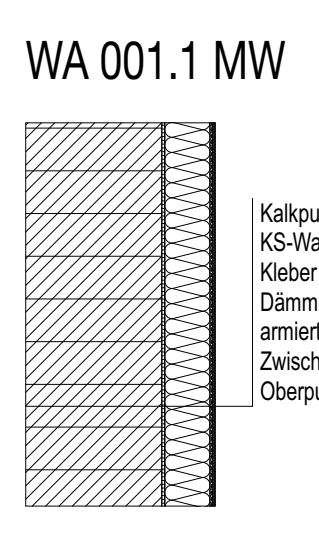
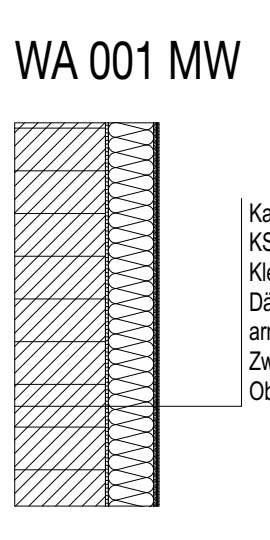


- Legende:**
- Bestand / Neubau / Wände / Decken
 - Neubau (Wände / Decken)
 - Altbruch / Wände / Decken
 - Mauerwerk
 - Putztafelwand
 - Wärmedämmung, hart
 - Gipskerter
 - Platten-Riegel-Fassade
 - Vergängung Systemerwand
 - Festputz
 - Richttafel
 - Stahlbeton/Schalungsbeton
 - Beton unbewehrt
 - Sockelbau
 - Breitspertholz, massiv
 - Systemerwand
 - Deckenbretsch
 - Wandbretsch
 - Altwandbretsch
 - Altdeckbretsch
- Legende: Baubestand:**
- BO = Bodenbeschichtung
 - BO 1 = Baugrubensohle als OK FFB
 - BO 2 = Deckenbeschichtung
 - BO 3 = Außenwand-Trennwand
 - BO 4 = Fundament
 - BO 5 = Fundament
 - BO 6 = Fundament
 - BO 7 = Fundament
 - BO 8 = Fundament
 - BO 9 = Fundament
 - BO 10 = Fundament
 - BO 11 = Fundament
 - BO 12 = Fundament
 - BO 13 = Fundament
 - BO 14 = Fundament
 - BO 15 = Fundament
 - BO 16 = Fundament
 - BO 17 = Fundament
 - BO 18 = Fundament
 - BO 19 = Fundament
 - BO 20 = Fundament
 - BO 21 = Fundament
 - BO 22 = Fundament
 - BO 23 = Fundament
 - BO 24 = Fundament
 - BO 25 = Fundament
 - BO 26 = Fundament
 - BO 27 = Fundament
 - BO 28 = Fundament
 - BO 29 = Fundament
 - BO 30 = Fundament
 - BO 31 = Fundament
 - BO 32 = Fundament
 - BO 33 = Fundament
 - BO 34 = Fundament
 - BO 35 = Fundament
 - BO 36 = Fundament
 - BO 37 = Fundament
 - BO 38 = Fundament
 - BO 39 = Fundament
 - BO 40 = Fundament
 - BO 41 = Fundament
 - BO 42 = Fundament
 - BO 43 = Fundament
 - BO 44 = Fundament
 - BO 45 = Fundament
 - BO 46 = Fundament
 - BO 47 = Fundament
 - BO 48 = Fundament
 - BO 49 = Fundament
 - BO 50 = Fundament
 - BO 51 = Fundament
 - BO 52 = Fundament
 - BO 53 = Fundament
 - BO 54 = Fundament
 - BO 55 = Fundament
 - BO 56 = Fundament
 - BO 57 = Fundament
 - BO 58 = Fundament
 - BO 59 = Fundament
 - BO 60 = Fundament
 - BO 61 = Fundament
 - BO 62 = Fundament
 - BO 63 = Fundament
 - BO 64 = Fundament
 - BO 65 = Fundament
 - BO 66 = Fundament
 - BO 67 = Fundament
 - BO 68 = Fundament
 - BO 69 = Fundament
 - BO 70 = Fundament
 - BO 71 = Fundament
 - BO 72 = Fundament
 - BO 73 = Fundament
 - BO 74 = Fundament
 - BO 75 = Fundament
 - BO 76 = Fundament
 - BO 77 = Fundament
 - BO 78 = Fundament
 - BO 79 = Fundament
 - BO 80 = Fundament
 - BO 81 = Fundament
 - BO 82 = Fundament
 - BO 83 = Fundament
 - BO 84 = Fundament
 - BO 85 = Fundament
 - BO 86 = Fundament
 - BO 87 = Fundament
 - BO 88 = Fundament
 - BO 89 = Fundament
 - BO 90 = Fundament
 - BO 91 = Fundament
 - BO 92 = Fundament
 - BO 93 = Fundament
 - BO 94 = Fundament
 - BO 95 = Fundament
 - BO 96 = Fundament
 - BO 97 = Fundament
 - BO 98 = Fundament
 - BO 99 = Fundament
 - BO 100 = Fundament



GENEHMIGUNGSPLANUNG

ERWEITERUNG DER THEODOR FONTANE GRUNDSCHULE IN FÜRSTENWALDE

Wohnort: Fürstenseestraße 11, 15317 Fürstenseestraße

Gemäßung: Pflanzenschutz, Putz, LSP

OK FFB (2017) = 41,77 m² (DIN EN 12165)

Stadt Fürstenseestraße
i.V. Herr Cornelia Hertke

ANTRAG: 4
15317 Fürstenseestraße

INEX GmbH - Fürstenseestraße
Station: Bismarck, Architekt: K.A.A.,
Lizenz: 34/17, 34/18, 34/19, 34/20, 34/21, 34/22, 34/23, 34/24, 34/25, 34/26, 34/27, 34/28, 34/29, 34/30, 34/31, 34/32, 34/33, 34/34, 34/35, 34/36, 34/37, 34/38, 34/39, 34/40, 34/41, 34/42, 34/43, 34/44, 34/45, 34/46, 34/47, 34/48, 34/49, 34/50, 34/51, 34/52, 34/53, 34/54, 34/55, 34/56, 34/57, 34/58, 34/59, 34/60, 34/61, 34/62, 34/63, 34/64, 34/65, 34/66, 34/67, 34/68, 34/69, 34/70, 34/71, 34/72, 34/73, 34/74, 34/75, 34/76, 34/77, 34/78, 34/79, 34/80, 34/81, 34/82, 34/83, 34/84, 34/85, 34/86, 34/87, 34/88, 34/89, 34/90, 34/91, 34/92, 34/93, 34/94, 34/95, 34/96, 34/97, 34/98, 34/99, 34/100

INGENIEURBÜRO HOCH-UND NIEBUH eG
Herr Schneider

INTEGRAL Projekt GmbH & Co. KG
Herr S. Schwabedissen

INGENIEURBÜRO WERNER SAUER & CO.
Herr S. Dornel

GWJ Ingenieurbüro für Bauphysik GmbH
Herr Pöggendorf, Herr Jäckel

Objektplanung - Hochbau
3. Obergeschoss
1:100, 1:20
DIN A0 (841x1189)

0 - Genehmigungsplanung

Regelaufbauten

Datum: Donnerstag, 23. November 2017